



LOMA LINDA
UNIVERSITY

NEWSGRAM

A weekly publication from the office of Student Affairs

Fall Quarter

October 16, 2014

Worship Activities

Loma Linda University Church

11125 Campus Street, Loma Linda



Church Services:
Saturday, 9:00 and 11:45 a.m.

Sabbath School:
10:30 a.m.



11057 Hill Dr., Loma Linda, CA 92354
T (909) 796-0222 F (909) 796-1992
campushill.org

Come join us in worship. Share God's love with us.

All LLU students are invited to join us for lunch every Sabbath at 1:30 p.m. in Linda Hall (building next to the church)

Church Services:

Saturdays at 9:30 a.m. for Sabbath School and
Worship Service at 11:00 a.m.



Chapel
University Church
11:00 a.m. - 11:50 a.m.

October 22, 2014

John Brunt

Senior Pastor, Azure Hills SDA Church

LLU Student ID badge is Mandatory for Attendance credit!

Student Service Center Hours

Monday: 8:30 am - 4:00 pm

Tuesday: 8:30 am - 4:00 pm

Wednesday: 12:10 am - 6:00 pm

Thursday: 8:30 am - 4:00 pm

Friday: 8:30 am - 12:30 pm

Announcements

LLU Department of Psychiatry Grand Rounds

"The Developing Brain"

Timothy R. Jennings M.D.



President-Elect of the Tennessee Psychiatric Association
Adjunct Faculty at the University of Tennessee College of Medicine,
Fellow of the American Psychiatric Association
Vice-President of the Southern Psychiatric Association
Master Psychopharmacologist, Author and International Speaker

Named one of America's Top Psychiatrist by the Consumer Research Institute of America in 2008, 2010, 2011 & 2012.

Friday, October 24, 2014, 11:00am - 12:30pm

LLU Behavioral Health Institute

1686 Barton Road, First Floor Education Room, #1100 Redlands CA 92373

About this talk: Experience changes brain structure and function. Beginning before conception, continuing in utero and through life, explore how environment, experience and choice alter human DNA and impact brain structure and function. The human brain is pliable and changeable and our experience causes our brain to change. This change begins in our parents genes prior to our conception, continues in the womb and persists throughout life. In this presentation we will explore how parental choices affect the developing brain and follow that through into childhood to explore how healthy nurturing, traumatic experience, diet, addictive substances, television, and even belief in God alter our genes, brain structure and brain function.

LEARNING OBJECTIVES:

1. Discuss environmental influences to brain development
2. Recognize the significance of transgenerational epigenetic influences to human DNA and brain function
3. Identify specific interventions to promote healthy brain development

We also extend an invitation to all interested parties to attend a special seminar by Dr Jennings on Friday October 24, 2014 at the Centennial Complex - Damazo Amphitheater at 19:00. **"The God-Shaped Brain: How Changing Your View of God Transforms Your Life."**

Accreditation Statement:

The Loma Linda University School of Medicine is accredited by the Accreditation Council for Continuing Medical Education to provide continuing medical education for physicians. Loma Linda University School of Medicine designates this Live Activity for a maximum of 1.5 AMA PRA Category 1 Credit(s) TM. Physicians should claim only the credit commensurate with the extent of their participation in the activity.

Disclosure Statement:

This program has been planned and implemented in accordance with ACCME essentials and standards. The Loma Linda University School of Medicine Office of Continuing Medical Education relies on its CME faculty to provide program content that is free of commercial bias. Therefore, in accordance with ACCME standards, any faculty and/or provider industry relationships will be disclosed and resolved.

For more information, contact Priscilla Verales at pverales@llu.edu or 909-558-9532

We're Hiring!



Do you like outreach? Do you want to help connect LLU campus with the local community? Join us at CAPS!

Positions Available

- G4H Healthy Living & Special Projects Coordinator
- My Campus Coordinator
- Public Relations Coordinator

To apply, please contact Tina Pruna at tpruna@llu.edu or 909-651-5011.

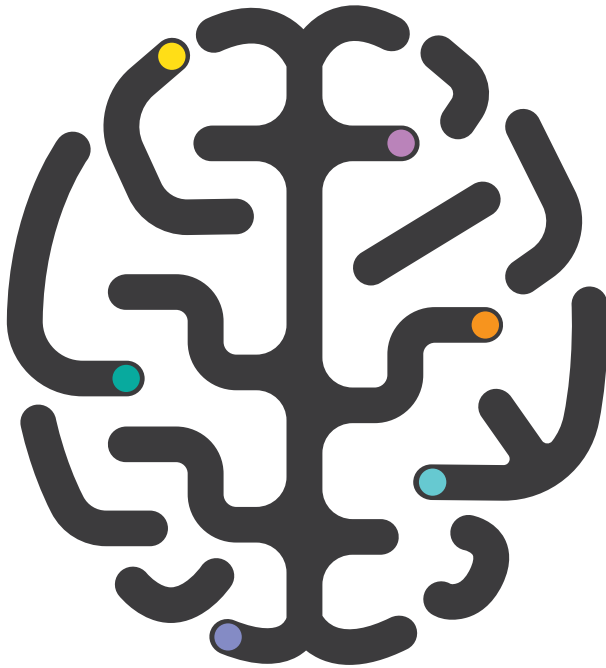


Visit www.llu.edu/caps for more info.

Announcements



Dr. Timothy Jennings
Friday, October 24, 2014 at 7 PM
 Location: Damazo Amphitheater,
 Centennial Complex



THE GOD-SHAPED BRAIN

How Changing Your View of God Transforms Your Life

WARREN MILLER'S **65th** SKI FILM

NO TURNING BACK

Tickets
 Adults - \$10.00
 Students - \$7.00
 Children under 12 - \$5.00
Door Prizes

Saturday Night, November 22, 2014 7:00 p.m.

Chan Auditorium, LL Elementary School, 10656 Anderson St., at Academy Way
 Medical Student Benefit brought to you by the Alumni Association, SMLLU

Tickets available online at www.llusmaa.org, or purchase at the LLU Student Affairs Office, or the Alumni Association, SMLLU, corner of Anderson & Starr

GREECE: Tyler Cecchetti - Josh Bibby JAPAN: Seth Wescott - Bob Kingwell SWITZERLAND: JJ Holmes - Van Kesterhout FRANCE: Seth Morrison - Mike Rutledge - Tim Perick - Heather Paul NORWAY: Kaylin Richardson - Bryce Anderson MONTANA: Santa Daulton - John Lee ALASKA: Boyd Backstrom - Jess McMillan - Chris Anthony COLORADO: Joe Caprio - John Morrison - Mikala Quinn

#WARRENMILLER | 2014-2015 TOUR

SPONSORS:

Embracing the Future

GLOBAL HEALTHCARE CONFERENCE

October 16-19, 2014
Loma Linda, California
www.lluglobal.com/conference

Brought to you by Loma Linda University Health in collaboration with Adventist Health International and the General Conference of Seventh-day Adventists

Share about your health field with minority high school students!

My Campus

Who: LLU Student & Staff Volunteers!
Where: Drayson Center, Collins Auditorium
When: Sunday, November 2 from 3:30-6:00pm

Sign Up Today!
lluhcommunityvolunteers.org
*Enter code: FSCREENS14 in step 8 to be entered into a quarterly raffle drawing.

Need more info? 909.651.5011 or caps@llu.edu

Newsgram is available on the web!
llu.edu/central/studentaffairs/index.page

The NEWSGRAM is a publication of Student Affairs. Information can be submitted to the Office of Student Affairs at newsgram@llu.edu. Deadline to submit information is on Wednesday Morning. Priority is given to events directly related to LLU. **Office phone number (909)558-4510**
 (909) 558-4510.